

# LICENSE PLATE NUMBERS

**IMPLAS** SDN BHD

Website: [www.implascp.com](http://www.implascp.com)  
Address: 25, Jalan Perniagaan Setia 1/4,  
Taman Perniagaan Setia, 81100,  
Johor Bahru, Johor, Malaysia.

Tel: + 607-5115739  
Fax: + 607-5114189  
Mobile / Whatsapp: + 6016-7783515  
Email: [sales@implascp.com](mailto:sales@implascp.com)



Visit Our Website

---

**MH**

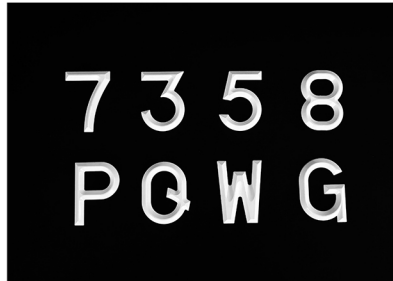
**MATERIALS**

Acrylic

**DIMENSION**

2.4 x 1.7 x 0.2" (h x w x t)

(size may vary, based on number "0")



---

**M26**

**MATERIALS**

Acrylic

**DIMENSION**

2.8 x 1.6 x 0.1" (h x w x t)

(size may vary, based on number "0")



---

**M35**

**MATERIALS**

Acrylic

**DIMENSION**

2.8 x 1.6 x 0.2" (h x w x t)

(size may vary, based on number "0")



---

### M34

#### MATERIALS

Acrylic

#### DIMENSION

2.8 x 1.6 x 0.1" (h x w x t)

(size may vary, based on number "0")



---

### M2

#### MATERIALS

Acrylic

#### DIMENSION

2.6 x 1.8 x 0.2"

(size may vary, based on number "0")



---

### A1

#### MATERIALS

Acrylic

#### DIMENSION

2.8 x 1.7 x 0.2"

(size may vary, based on number "0")



---

## LN88

### MATERIALS

Acrylic

### DIMENSION

2.8 x 1.6 x 0.2" (h x w x t)

(size may vary, based on number "0")



---

## B1

### MATERIALS

Acrylic

### COLOURS AVAILABLE

Black and white

### DIMENSION

2.8 x 2 x 0.2" (h x w x t)

(size may vary, based on number "0")

